

[www.indiratrade.com](http://www.indiratrade.com)



MONDAY

# CURRENCY COMMODITIES

**WEEKLY REPORT**  
**28 JAN 2019 TO 01 FEB 2019**

**EDGE**



**INDIRA SECURITIES PVT. LTD.**



## WEEKLY INDICES CHANGES

INDEX	CLOSE	PREV. CLOSE	Change (%)
SENSEX	36025.54	36386.61	-0.99%
NIFTY	10780.5	10907	-1.16%
DOW	24737.2	24706.3	0.13%
NASDAQ	7164.86	7157.23	0.11%
FTSE	6809.22	6968.33	-2.28%
NIKKEI	20686.5	20666.1	0.10%
DAX	11281.8	11205.5	0.68%
CAC	4925.82	4875.93	1.02%

SS

## Market Round Up:

- **Forex: Sterling Hits New Highs on Brexit Optimism:** - The pound hit a two-year high against the euro Friday and a three-month high against the dollar on growing confidence that the U.K. can avoid crashing out of the European Union.
- **The U.K. newspaper The Sun reported that Ireland's Democratic Unionist Party is prepared to conditionally back Prime Minister Theresa May's Brexit Plan B next week.** The deal faces a debate and vote in Parliament on January 29. For May's deal to be approved, she will need to convince far more than the handful of DUP lawmakers. Her plan was rejected by 432 votes to 202 in the House of Commons earlier this month.
- **Emerging markets optimism pushes MSCI index to 4-month high.**
- **Treasuries, dollar drop amid Fed balance sheet speculation.**
- **Stocks Rise on Hopes for Earnings, Shutdown's End: Markets Wrap:** - U.S. stocks rose, paring the first weekly decline of the year, as corporate earnings bolstered confidence in the economy and the potential for a deal to end the government shutdown increased. Treasuries yields rose and the dollar weakened against most of its major peers.

## RBI REFERENCE RATE

INDEX	CLOSE	PREV. CLOSE
USDINR	71.1051	71.1418
EURINR	80.4986	81.0656
JPYINR	64.7400	65.0400
GBPINR	93.2396	92.2946

## FII FIGURES

DATE	FII FIGURES IN CRORE
21/01	-300
22/01	-79
23/01	-776
24/01	-94
25/01	689
NET	-559.30

## DII FIGURES

DATE	DII FIGURES IN CRORE
21/01	521
22/01	-84
23/01	584
24/01	390
25/01	-147
NET	+1263



## DOLLAR INDEX CHART



1. **RSI:** 62.20
2. **ADX:** Indicating Sideways signal
3. **Stochastic Oscillator:** indicating Sideways signal
4. **ATR:** 1.19
5. **Moving averages:** Pair is trading above 50 and 100 Day simple moving averages..

## USDINR TECHNICAL CHART (INDIAN RUPEE)



- 1) **RSI:** 79.39
- 2) **ADX:** Indicating positive signal
- 3) **Stochastic Oscillator:** indicating positive signal
- 4) **ATR:** 0.8760
- 5) **Moving averages :** Pair is trading above 50 and 100 Day simple moving averages..



## DOMESTIC CURRENCY

Domestic	S2	S1	PIVOT	R1	R2
USDINR	70.12	70.68	71.08	71.63	72.03
EURINR	80.57	80.93	81.36	81.73	82.16
GBPINR	89.75	91.01	91.77	93.03	93.79
JPYINR	64.46	64.8	65.35	65.69	66.24

## GLOBAL CURRENCY

Global	S2	S1	PIVOT	R1	R2
DOLLAR INDEX	95.14	95.75	96.07	96.68	97
EURUSD	1.13	1.14	1.14	1.15	1.15
GBPUSD	1.27	1.28	1.29	1.3	1.31
USDJPY	107.38	108.36	108.95	109.93	110.52

## CURRENCY PERFORMANCE

CURRENCY	CLOSE PRICE	DAY	WEEK	MONTHLY	YEARLY
EURO	1.1414	0.02%	0.44%	-0.22%	-7.81%
POUND	1.31928	-0.06%	2.44%	3.98%	-6.17%
AUSTRALIAN DOLLAR	0.71947	0.18%	0.39%	2.02%	-11.23%
NEWZEALAND DOLLAR	0.6841	0.06%	1.63%	1.85%	-6.54%
YEN	109.34	-0.13%	-0.29%	-0.91%	0.36%
YUAN	6.74032	-0.17%	-0.86%	-1.86%	6.38%
SWISS FRANC	0.99229	-0.06%	-0.46%	1.12%	5.88%
CANADIAN DOLLAR	1.3216	-0.01%	-0.56%	-3.09%	7.13%
MEXICAN PESO	18.9813	0.01%	-0.91%	-3.34%	2.06%
INDIAN RUPEE	70.89	-0.14%	-0.44%	1.18%	11.48%
BRAZILIAN REAL	3.7695	-0.06%	0.51%	-3.89%	19.48%
RUSSIAN RUBBLE	65.8768	-0.11%	-0.73%	-5.59%	16.99%
DOLLAR INDEX	95.75	-0.05%	-0.62%	-0.68%	7.20%
KORREAN WON	1117.2	-0.05%	-1.40%	0.35%	4.42%
SOUTH AFRICAN RAND	13.5998	-0.06%	-1.61%	-5.21%	13.90%
SINGAPORE DOLLAR	1.3521	-0.11%	-0.49%	-0.78%	3.22%
HONGKONG DOLLAR	7.8458	0.01%	0.01%	0.18%	0.36%



## FUNDAMENTAL OF COMMODITIES

### MAJOR COMMODITIES

#### MCX ENERGY WEEKLY

Commodity	S2	S1	Pivot	R1	R2
Crude oil	3487.7	3657.3	3745.7	3915.3	4003.7
Natural Gas	194.6	216.4	240.4	262.2	286.2

#### MCX BASE METAL WEEKLY

Commodity	S2	S1	Pivot	R1	R2
Copper	404.7	417.0	423.9	436.2	443.1
Zinc	169.9	177.6	181.9	189.6	193.9
Lead	136.6	139.2	141.0	143.6	145.4
Nickel	782.5	810.6	826.7	854.8	870.9

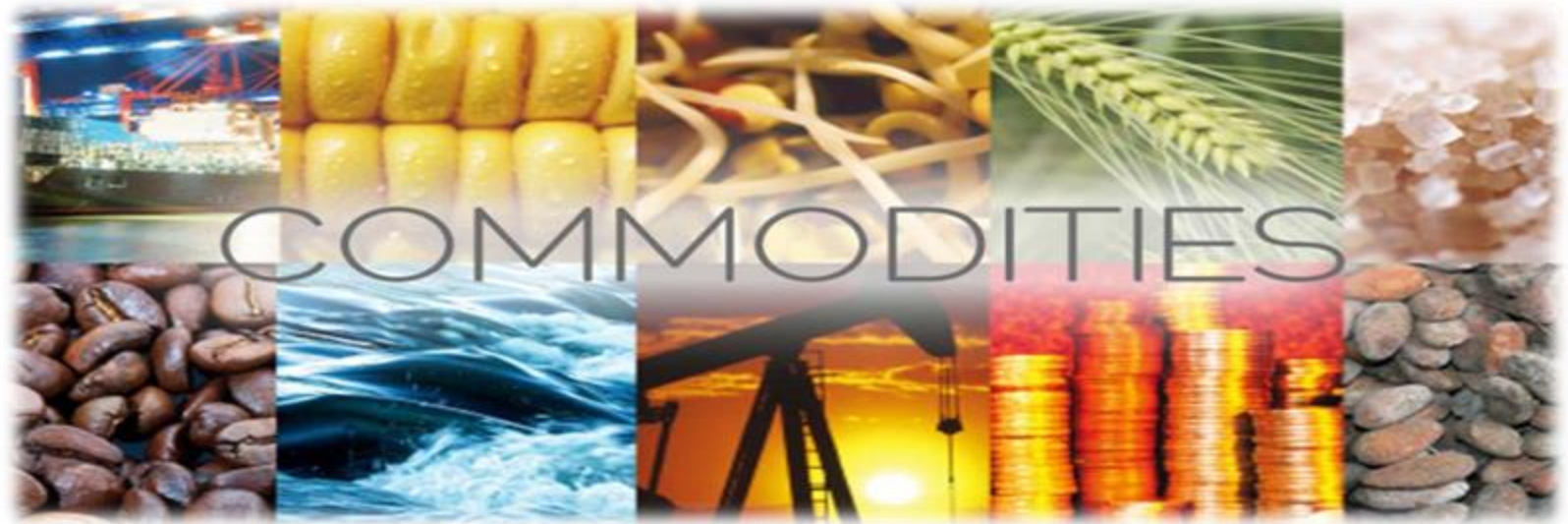
#### PRECIOUS METAL WEEKLY

Commodity	S2	S1	Pivot	R1	R2
Gold	31737.0	31914.0	32152.0	32329.0	32567.0
Silver	38695.3	38946.7	39358.3	39609.7	40021.3

International Commodity	S2	S1	Pivot	R1	R2	CMP	PREV CLOSE
Gold COMEX	\$1,269.67	\$1,276.33	\$1,286.67	\$1,293.33	\$1,303.67	\$1,280.00	\$1,283.00
SILVER COMEX	15.11	15.25	15.5	15.64	15.89	15.3	15.4
NYMEX CRUDE	49.09	51.57	52.85	55.33	56.61	53.13	54.04
BRENT CRUDE	57.43	60.03	61.51	64.11	65.59	61.2	62.62

#### Updates:

- Oil prices climb as U.S. threatens sanctions against Venezuela: - Oil prices rose on Friday as turmoil in Venezuela triggered concerns that its crude exports could soon be disrupted. Washington on Thursday signaled it could impose sanctions on Venezuela's oil exports as Caracas descends further into political and economic turmoil.
- Gold rises to the best levels of the week as the US dollar slumps: - Gold touched the lows of January early in the week but has bounced back and is now at the best levels since last Friday. The rebound underscores the \$1275-\$1300 range that's characterized gold for the past three weeks. We're still in the countdown to lunar new year with China on holiday the week of Feb 4. That's a tailwind for gold but it needs to break above the top of the range to generate any real momentum.

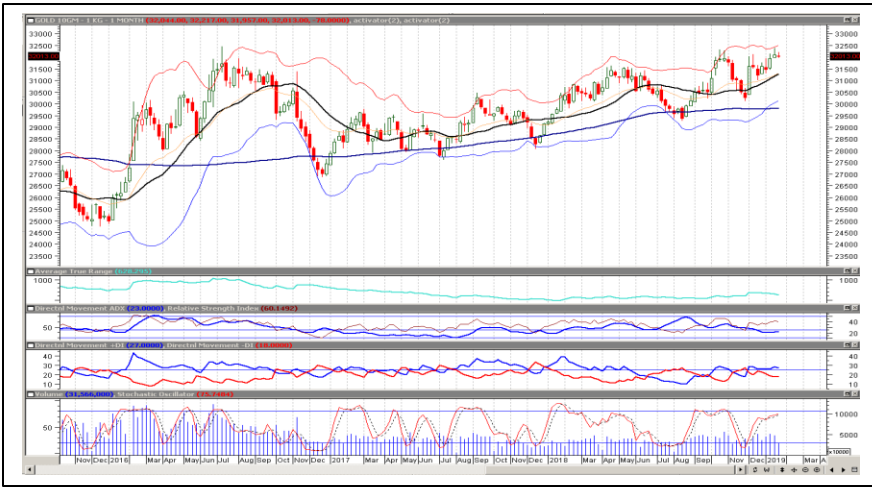


## MAJOR COMMODITIES

Commodity Major	Price	Day	Weekly	Monthly	Yearly
<b>Crude Oil</b>	53.3553	-0.58%	-0.75%	17.62%	-18.32%
<b>Brent</b>	61.5251	-0.37%	-1.67%	14.67%	-11.18%
<b>Natural gas</b>	2.9226	-8.21%	-11.72%	-0.35%	-19.32%
<b>Gold</b>	1304.98	0.00%	1.74%	1.49%	-2.95%
<b>Silver</b>	15.8217	0.30%	3.79%	2.05%	-7.92%
<b>Platinum</b>	813.5	0.00%	2.84%	2.75%	-18.93%
<b>Palladium</b>	1361	0.04%	-0.04%	7.90%	25.32%
<b>Copper</b>	2.7204	-0.84%	-0.63%	0.56%	-14.30%
<b>Lead</b>	2105.5	1.59%	5.87%	6.18%	-19.07%
<b>Aluminum</b>	1873.25	1.67%	1.35%	1.70%	-15.37%
<b>Tin</b>	21120	-1.09%	-0.78%	5.83%	-6.84%
<b>Zinc</b>	2648.5	-0.46%	1.14%	3.25%	-27.44%



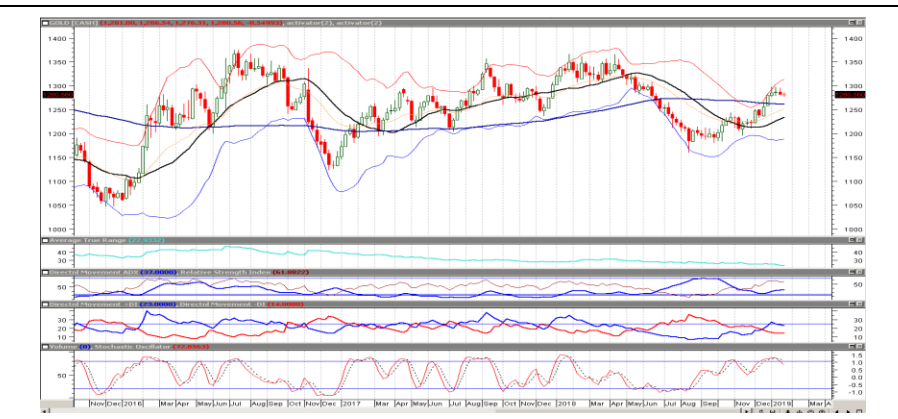
## MCX GOLD CHART



Commodity	S2	S1	Pivot	R1	R2
Gold	31737.0	31914.0	32152.0	32329.0	32567.0

GOLD TECHNICAL INDICATOR	
RSI(14)	BUY
STOCH(9,6)	BUY
STOCHRSI(14)	BUY
MACD(12,26)	BUY
ADX(14)	SELL
Williams %R	BUY
CCI(14)	BUY
Highs/Lows(14)	BUY
Ultimate Oscillator	SELL
ROC	BUY
BUY	7
SELL	2
NEUTRAL	0
<b>SUMMARY</b>	<b>STRONG BULLISH</b>

## GOLD INTERNATIONAL CHART



Commodity	S2	S1	Pivot	R1	R2
Gold	\$1,269.7	\$1,276.3	\$1,286.7	\$1,293.3	\$1,303.7

GOLD INTERNATIONAL TECHNICAL INDICATOR	
RSI(14)	BUY
STOCH(9,6)	SELL
STOCHRSI(14)	SELL
MACD(12,26)	BUY
ADX(14)	BUY
Williams %R	BUY
CCI(14)	BUY
Highs/Lows(14)	BUY
Ultimate Oscillator	BUY
ROC	BUY
BUY	7
SELL	2
NEUTRAL	0
<b>SUMMARY</b>	<b>STRONG BULLISH</b>



## MCX SILVER CHART



Commodity	S2	S1	Pivot	R1	R2
Silver	38695.3	38946.7	39358.3	39609.7	40021.3

### SILVER TECHNICAL INDICATOR

RSI(14)	BUY
STOCH(9,6)	SELL
STOCHRSI(14)	SELL
MACD(12,26)	BUY
ADX(14)	SELL
Williams %R	BUY
CCI(14)	BUY
Highs/Lows(14)	BUY
Ultimate Oscillator	BUY
ROC	BUY
BUY	6
SELL	3
NEUTRAL	0
<b>SUMMARY</b>	<b>MILD BULLISH</b>

## SILVER INTERNATIONAL CHART

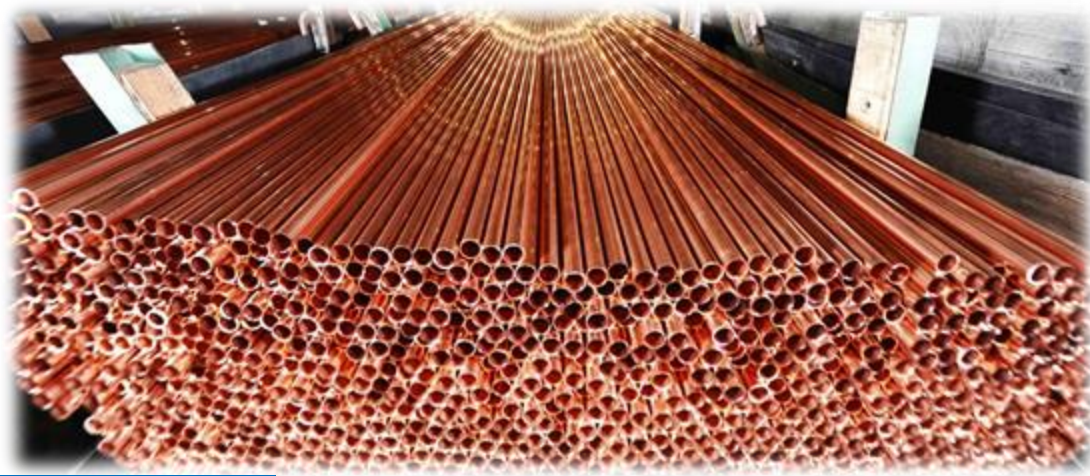


Commodity	S2	S1	Pivot	R1	R2
Silver	\$15.1	\$15.3	\$15.5	\$15.6	\$15.9

### SILVER INTERNATIONAL TECHNICAL INDICATOR

RSI(14)	BUY
STOCH(9,6)	SELL
STOCHRSI(14)	SELL
MACD(12,26)	BUY
ADX(14)	SELL
Williams %R	NETURAL
CCI(14)	BUY
Highs/Lows(14)	BUY
Ultimate Oscillator	BUY
ROC	BUY
BUY	5
SELL	3
NEUTRAL	1
<b>SUMMARY</b>	<b>NETURAL</b>





## MCX COPPER CHART

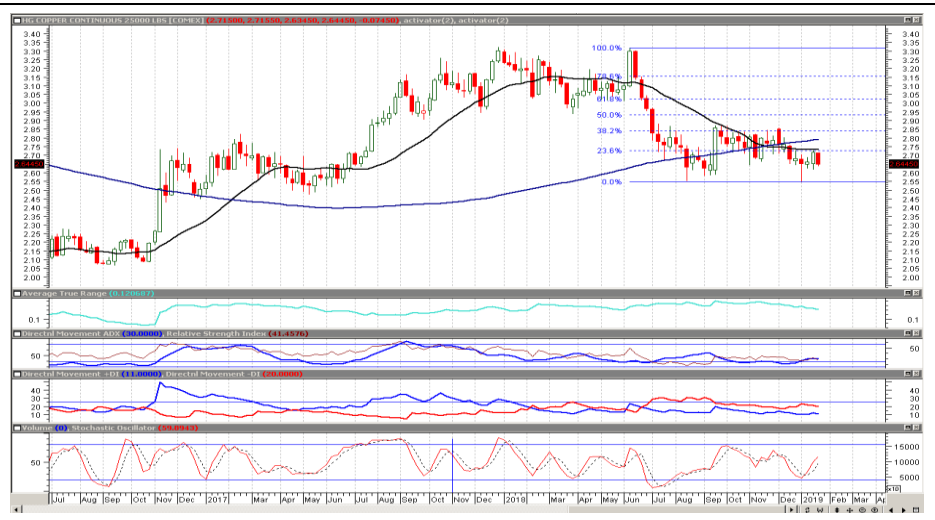


Commodity	S2	S1	Pivot	R1	R2
Copper	404.7	417.0	423.9	436.2	443.1

### COPPER TECHNICAL INDICATOR

RSI(14)	SELL
STOCH(9,6)	BUY
STOCHRSI(14)	BUY
MACD(12,26)	SELL
ADX(14)	SELL
Williams %R	NETURAL
CCI(14)	SELL
Highs/Lows(14)	BUY
Ultimate Oscillator	BUY
ROC	SELL
BUY	4
SELL	5
NEUTRAL	1
SUMMARY	MILD BEARISH

## COPPER INTERNATIONAL CHART



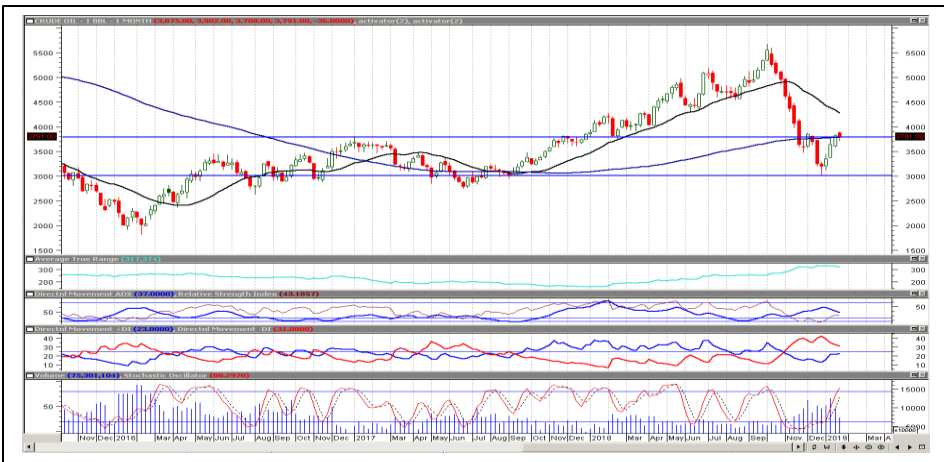
Commodity	S2	S1	Pivot	R1	R2
Copper	\$2.6	\$2.7	\$2.7	\$2.8	\$2.8

### COPPER INTERNATIONAL TECHNICAL INDICATOR

RSI(14)	SELL
STOCH(9,6)	BUY
STOCHRSI(14)	BUY
MACD(12,26)	SELL
ADX(14)	SELL
Williams %R	NETURAL
CCI(14)	SELL
Highs/Lows(14)	BUY
Ultimate Oscillator	BUY
ROC	SELL
BUY	4
SELL	5
NEUTRAL	1
SUMMARY	MILD BEARISH



## MCX CRUDE CHART



Commodity	S2	S1	Pivot	R1	R2
Crude oil	3487.7	3657.3	3745.7	3915.3	4003.7

BRENT CRUDE OIL TECHNICAL INDICATOR	
RSI(14)	SELL
STOCH(9,6)	BUY
STOCHRSI(14)	BUY
MACD(12,26)	SELL
ADX(14)	BUY
Williams %R	NETURAL
CCI(14)	SELL
Highs/Lows(14)	BUY
Ultimate Oscillator	SELL
ROC	SELL
BUY	4
SELL	5
NEUTRAL	1
SUMMARY	NETURAL

## NYMEX CRUDE CHART



Commodity	S2	S1	Pivot	R1	R2
Crude oil	\$49.1	\$51.6	\$52.9	\$55.3	\$56.6

CRUDE.OILNYM TECHNICAL INDICATOR	
RSI(14)	SELL
STOCH(9,6)	BUY
STOCHRSI(14)	BUY
MACD(12,26)	SELL
ADX(14)	SELL
Williams %R	NETURAL
CCI(14)	SELL
Highs/Lows(14)	BUY
Ultimate Oscillator	SELL
ROC	SELL
BUY	3
SELL	6
NEUTRAL	1
SUMMARY	MILD BEARISH



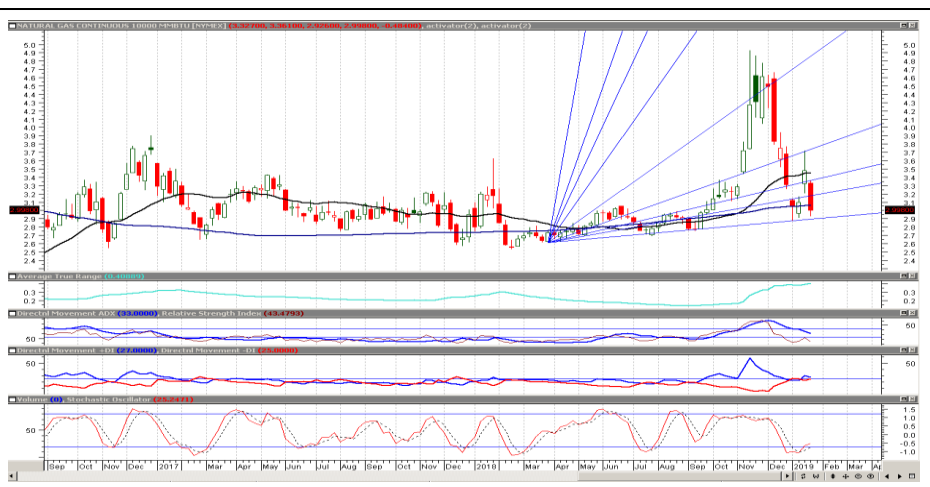
## MCX NATURAL GAS



Commodity	S2	S1	Pivot	R1	R2
Natural Gas	194.6	216.4	240.4	262.2	286.2

NATURALGAS TECHNICAL INDICATOR	
RSI(14)	SELL
STOCH(9,6)	BUY
STOCHRSI(14)	BUY
MACD(12,26)	SELL
ADX(14)	BUY
Williams %R	SELL
CCI(14)	SELL
Highs/Lows(14)	BUY
Ultimate Oscillator	SELL
ROC	SELL
BUY	4
SELL	6
NEUTRAL	0
<b>SUMMARY</b>	<b>MILD BEARISH</b>

## NATURAL GAS INTERNATIONAL



Commodity	S2	S1	Pivot	R1	R2
Natural Gas	\$3.0	\$3.2	\$3.5	\$3.7	\$4.0

NATURAL GAS INTER. TECHNICAL INDICATOR	
RSI(14)	SELL
STOCH(9,6)	BUY
STOCHRSI(14)	BUY
MACD(12,26)	SELL
ADX(14)	SELL
Williams %R	SELL
CCI(14)	SELL
Highs/Lows(14)	BUY
Ultimate Oscillator	SELL
ROC	SELL
BUY	3
SELL	7
NEUTRAL	0
<b>SUMMARY</b>	<b>STRONG BEARISH</b>

# IMP ECONOMOIC DATA TO WATCH FOR THE WEEK

DATE	TIME	CURRENCY	ECONOMIC DATA	FORECAST	PREVIOUS
MonJan 28	7:30pm	EUR	ECB President Draghi Speaks		
	8:00pm	GBP	BOE Gov Carney Speaks		
TueJan 29	1:30pm	EUR	Spanish Unemployment Rate	14.40%	14.60%
	8:30pm	USD	CB Consumer Confidence	125	128.1
WedJan 30	All Day	EUR	German Prelim CPI m/m	-0.70%	0.10%
	3:00pm	GBP	Net Lending to Individuals m/m	4.3B	4.4B
	6:45pm	USD	ADP Non-Farm Employment Change	170K	271K
ThuJan 31	12:30am	USD	FOMC Statement		
		USD	Federal Funds Rate	<2.50%	<2.50%
	1:00am	USD	FOMC Press Conference		
	6:30am	CNY	Manufacturing PMI	49.3	49.4
	1:30pm	EUR	Spanish Flash GDP q/q	0.60%	0.60%
	3:30pm	EUR	Prelim Flash GDP q/q	0.20%	0.20%
	7:00pm	USD	Core PCE Price Index m/m	0.20%	0.10%
		USD	Employment Cost Index q/q	0.80%	0.80%
		USD	Personal Spending m/m	0.30%	0.40%
	8:15pm	USD	Chicago PMI	61	65.4
	9:30pm	EUR	German Buba President Weidmann Speaks		
FriFeb 1	7:15am	CNY	Caixin Manufacturing PMI	49.7	49.7
	3:00pm	GBP	Manufacturing PMI	53.5	54.2
	3:30pm	EUR	CPI Flash Estimate y/y	1.40%	1.60%
		EUR	Core CPI Flash Estimate y/y	1.00%	1.00%
	7:00pm	USD	Average Hourly Earnings m/m	0.30%	0.40%
		USD	Non-Farm Employment Change	165K	312K
		USD	Unemployment Rate	3.80%	3.90%
	8:30pm	USD	ISM Manufacturing PMI	54.3	54.1
		USD	Revised UoM Consumer Sentiment	90.7	90.7



204 Amardarshan Building 3rd floor Saket Nagar , Indore-452018

**Call:** 0731-4797170-173 **Mob:** +91-9303172345 / **Toll Free:** 18001030059 / **SMS:** <INDIRA> to 56070

## DISCLAIMER

This report is for private circulation within the Indira Group. This report is strictly confidential and for information of the selected recipient only and may not be altered in any way, transmitted to, copied or distributed, in part or in whole, to any other person or to the media or reproduced in any form. This report should not be construed as an offer or solicitation to buy or sell any securities or any interest in securities. It does not constitute a personal recommendation or take into account the particular investment objectives, financial situations, or any such factor. The information, opinions estimates and forecasts contained here have been obtained from, or are based upon, sources we believe to be reliable, but no representation of warranty, express or implied, is made by us to their accuracy or completeness. Opinions expressed are our current opinions as of our current opinions as of the data appearing on this material only and are subject to change without notice.